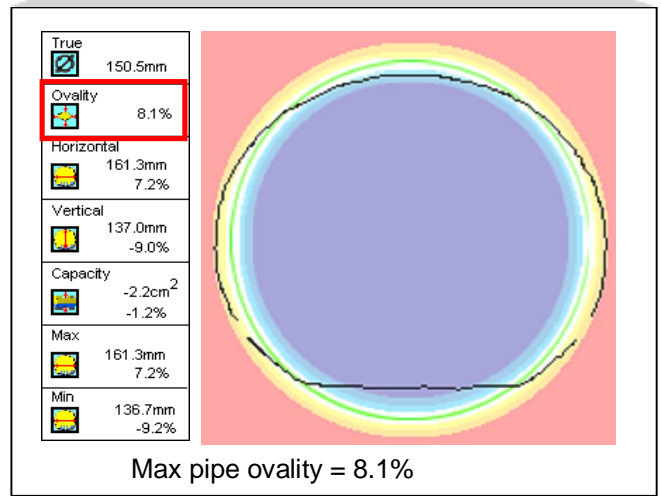
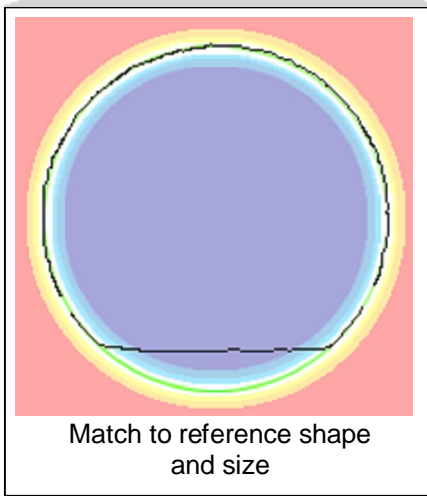
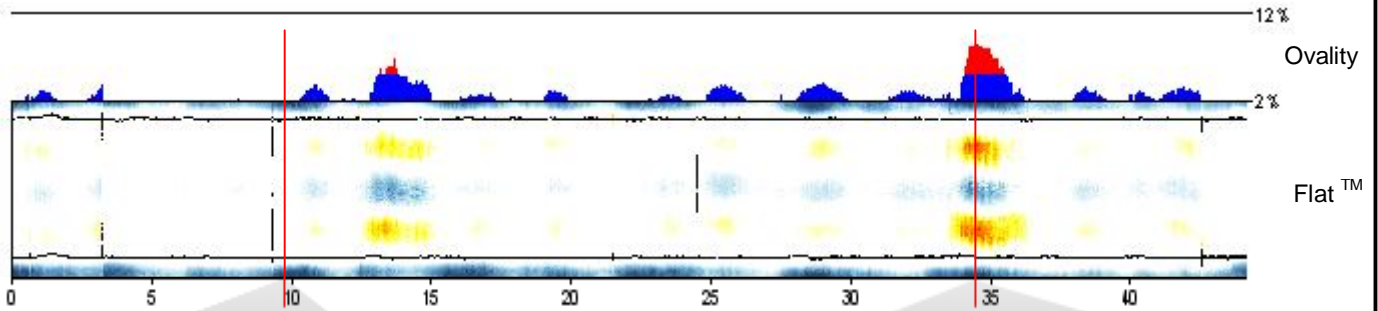




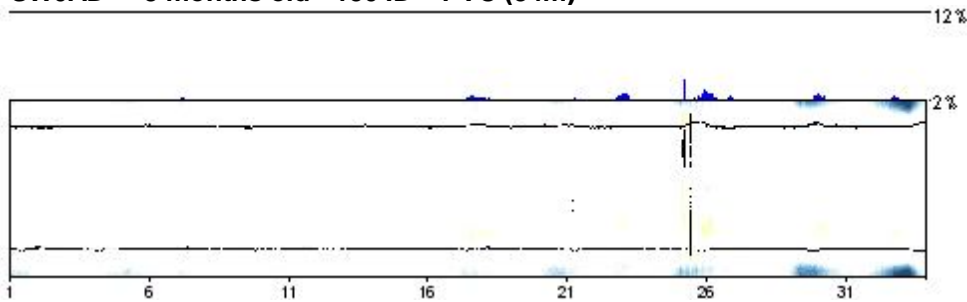
MEASURE ... PRE-ADOPTION

SW010 – 9 months old - 150 ID – PVC (44m)

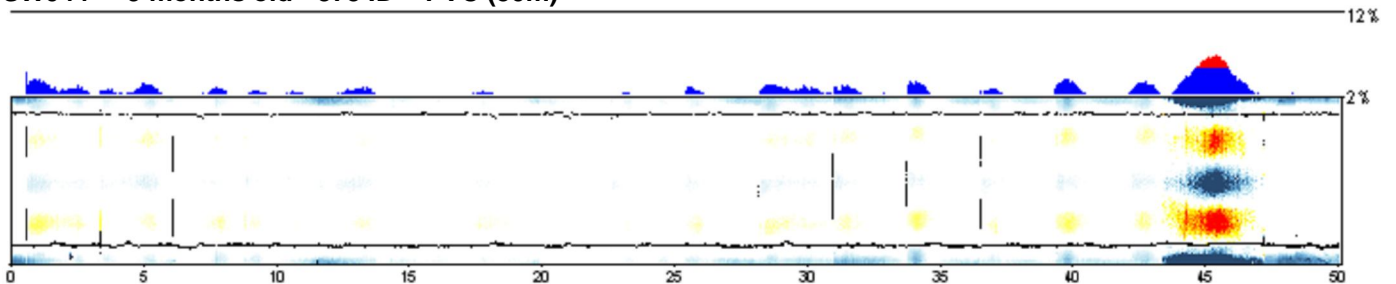


1km Project Report

SW0AD – 8 months old - 150 ID – PVC (34m)

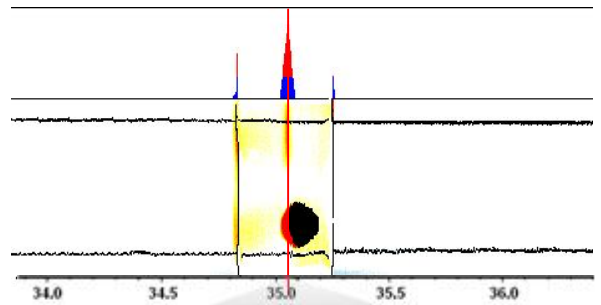
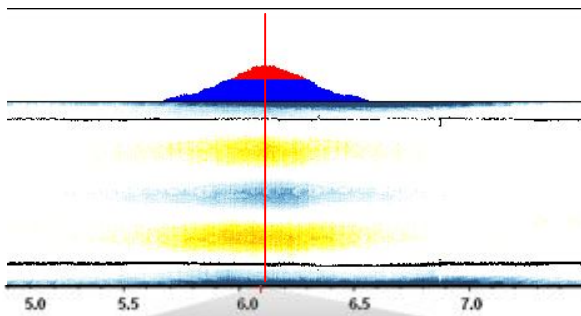


SW044 – 9 months old - 375 ID – PVC (50m)



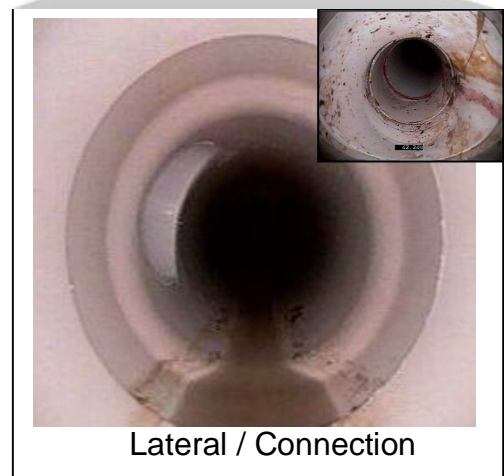
MEASURE ... PRE-ADOPTION

SW0AB – 9 months old - 150 ID – PVC (50m)



True	148.8mm
Ovality	6.8%
Horizontal	157.2mm 5.5%
Vertical	135.7mm -9.0%
Capacity	-2.4cm ² -1.4%
Max	158.0mm 6.0%
Min	135.5mm -9.1%

Max pipe ovality = 6.8%



These PVC pipe lengths were surveyed as part of an adoption process for a new building development. This adoption standard allows for a maximum Ovality of 6% after 5 years.

Findings:

- Within nine months, two of the pipes exceed the allowable limits.

Engineer's Action Plan

- Generally the engineer highlights the areas for re-excavation and re-compaction before adoption.
- Site inspection through the installation process for future developments involving this contractor.

Ovality as per ASTM F1216