

CLEARLINE PROFILER CASE STUDY

FAILURE OF NEWLY LAID PVC

P.R. Anderson

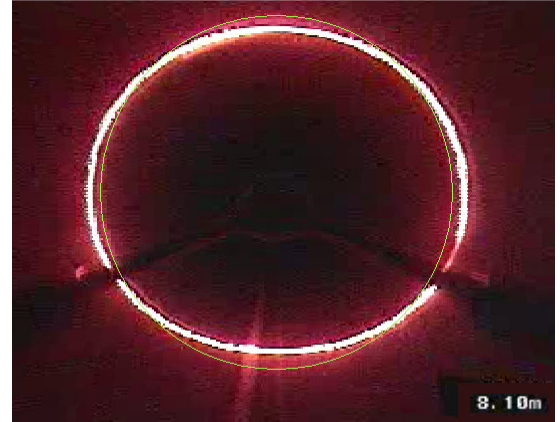
CleanFlow Systems Limited, Albany, Auckland, New Zealand

Location: Rodney, Auckland New Zealand
Pipe Size: 36inch
Age of Pipe: 4 months
Pipe Type: Polyvinyl Chloride (PVC)

Overview

This is a standard stormwater pre-adoption profile inspection

Results: Deflection and Ovality thresholds set to five year allowable limits of 7.5%. After 4 months one of the pipes has already failed in one section while others are showing signs of early failure.



Outcome:

Engineers highlighted areas for re-excavation and re-compaction before adoption was completed.

